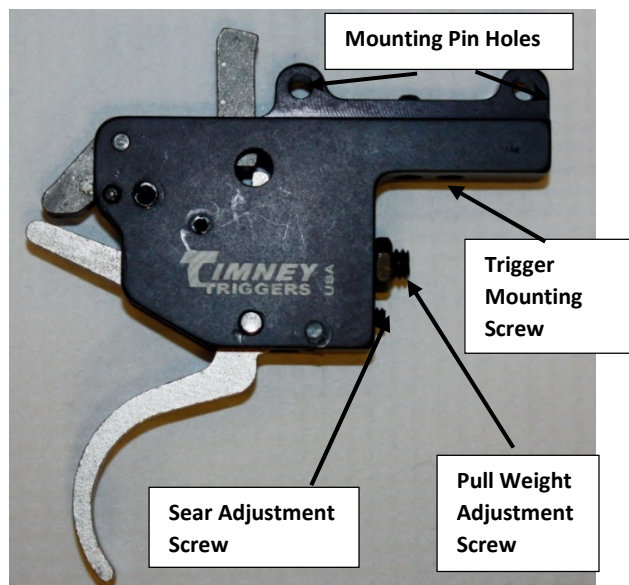




The World's Finest Triggers®

CZ452L/CZ452M

TRIGGER INSTALLATION INSTRUCTIONS



Thank you for purchasing this Timney Trigger. It has been designed and manufactured to provide you with a lifetime of dependable service. Each trigger is hand tested and calibrated on a rifle before leaving the factory. Please read these instruction **fully** before you begin installing the trigger, you'll be glad you did.

1. Unload the rifle and remove the magazine, visually and physically ensure that the rifle is **unloaded** before beginning trigger installation.
2. Remove the factory trigger by driving out the pins that hold the trigger and sear assembly to the receiver using a 3/32 punch. Keep these pins as you will need them to install your trigger.
3. Attach your Timney Trigger to the action with the pins and tighten the trigger mounting screw so that it is snug
4. Check the safety to ensure proper function. The CZ452 safety operates using a sear lifting design. With the safety engaged the trigger should move but the rifle should not fire. Squeeze the trigger with the rifle on safe to verify it does not fire coming off safe. If it does fire see the FAQ section of the instruction
5. Replace rifle action in the stock. With some stocks it may be necessary to do some inletting in certain areas.

Function and Safety Check – (Do all function testing with an UNLOADED rifle)

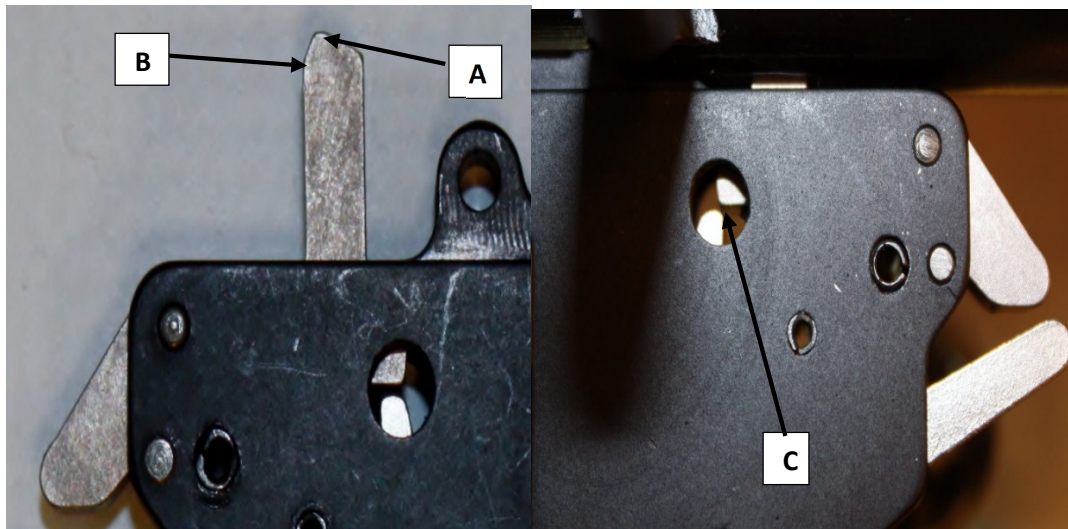
1. Functional Testing
 - a. Verify the bolt moves in and out freely with no restrictions
 - b. Verify the trigger pull is crisp and clean
2. Safety Testing
 - a. Verify the safety is working properly. With the safety engaged and the trigger is pulled does the rifle fire?
 - b. When the safety is released does the trigger fire?
3. Min/Max Pull Weight
 - a. Minimum pull weight is 1.5 lbs., Maximum pull weight is 4 lbs. If you need a pull weight gauge please call or visit our website to purchase. www.timneytriggers.com

Trigger Adjustment

1. The trigger pull weight can be modified by the pull weight adjustment screw on the front of the trigger (see diagram). Turning the screw clockwise (in) will increase your trigger pull weight. By turning the screw counter clockwise (out) the pull weight will lessen.
2. The sear adjustment can be changed with the screw on the back of the trigger (see diagram). By turning the screw clockwise (in) you will lessen the sear engagement. By turning the screw counter clockwise (out) you will be increasing the sear engagement. The sear engagement is set at the factory to ensure a crisp, creep free trigger break. Modification should not be necessary. Reducing the sear engagement will result in slam fires.

Frequently Asked Questions

1. If the bolt is dragging you need to take a file or grind off the tip of the sear to allow for smooth bolt action (see diagram A)
2. Additional clearance may be needed for your safety to operate properly. Remove material at point B using a file or grinder. Remove only a few thousandths of an inch at a time to guarantee clearance. Be sure not to change the angle; follow the angle and remove small amounts of metal until the safety lifts the sear off the trigger allowing it to move freely (see diagram B)
3. If the safety is working correctly your will see a space between the trigger and sear. (see diagram C)



Now go out and enjoy your new TIMNEY TRIGGER!



QR Code for Instructions

TIMNEY TRIGGER GUARANTEE

Material and workmanship: This Timney trigger has been carefully inspected, tested and adjusted to give a lifetime of dependable service. Every possible care has been exercised in its design and construction. If any defect in workmanship or material should develop under conditions of normal use and service, any necessary repairs, including parts and labor will be made at NO CHARGE to the purchaser providing that our inspection reveals parts were not damaged through accident, alteration, misuse, abuse or other causes beyond our control. We neither assume nor imply any oral or statutory warranties, and we neither assume nor authorize any person to assume us for any obligation or liability in connection with this trigger. Repairs or disassembly of this trigger in any manner without specific authorization, voids the guarantee.